

# EyeWay™

Drive safely into the future.





# **Background – cost of accidents**

**“Road crashes kill about 1.3 million people worldwide every year and severely injure an estimated 50 million.”**

**(ROAD SAFETY ANNUAL REPORT 2017 © OECD 2017)**

**About 40% of the accidents with casualties occurred at intersection.**

**(Central Bureau of Statistics)**

**"For every person killed in traffic crashes, many more suffer serious injuries with life-changing consequences. Serious injuries are not only more common but are also often more costly to society."**

**(European Commission - Fact Sheet 2016 road safety statistics)**



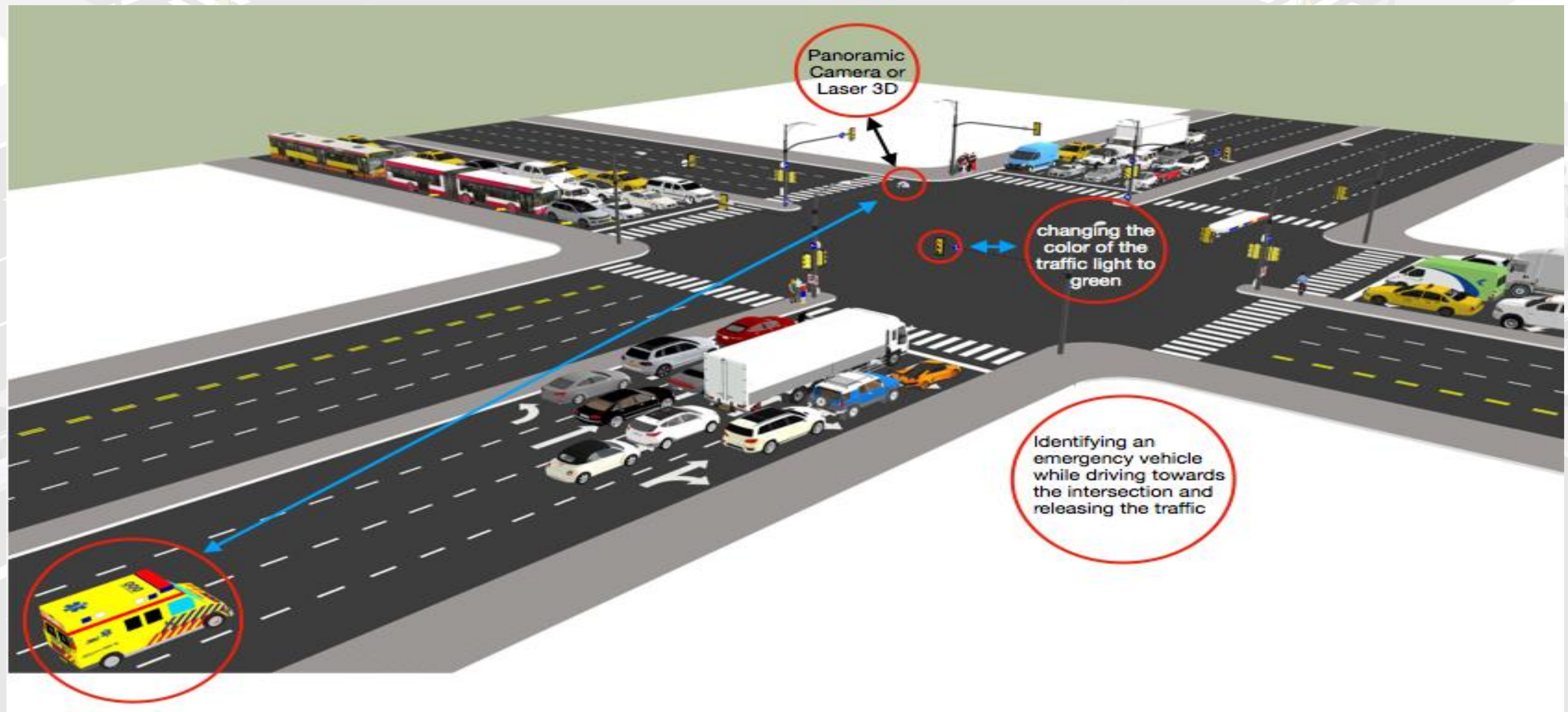


# Current solutions



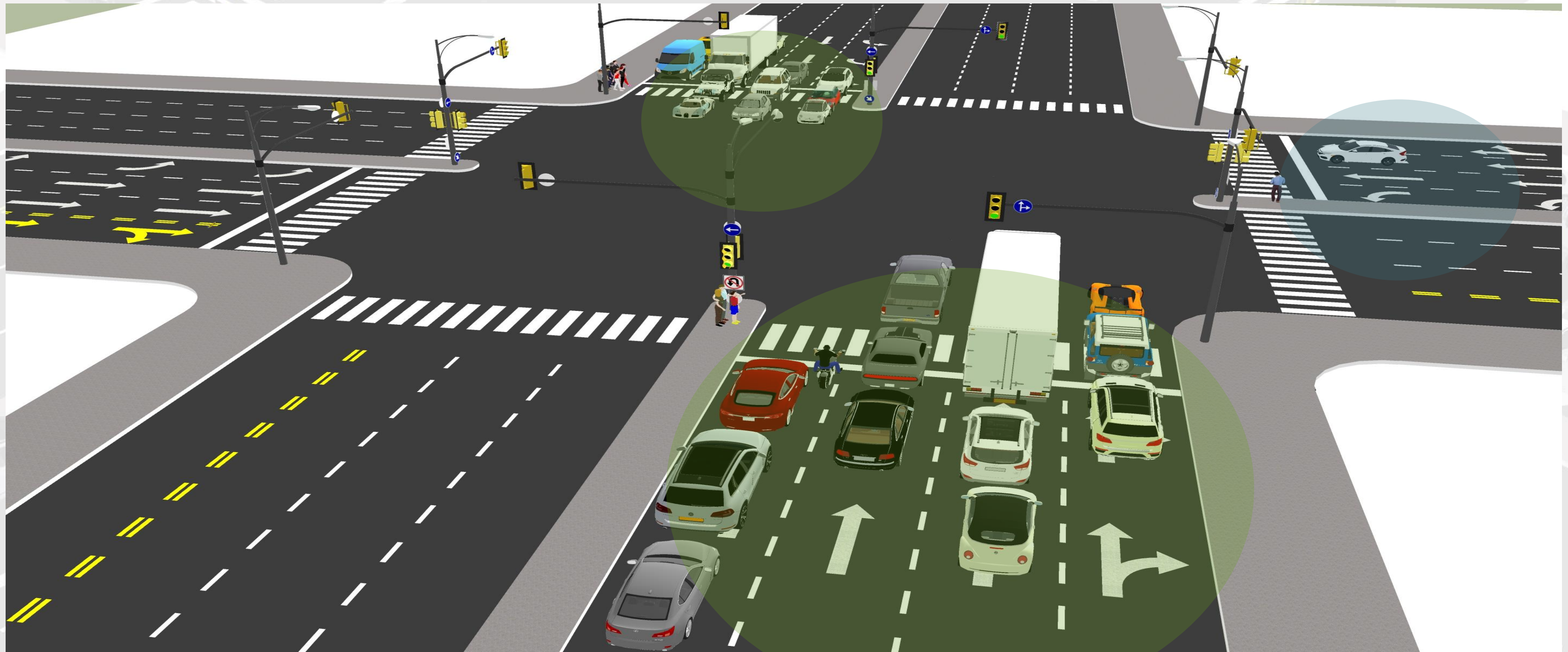


# זיהוי רכב חרום ושחרור נתיב נסיעה



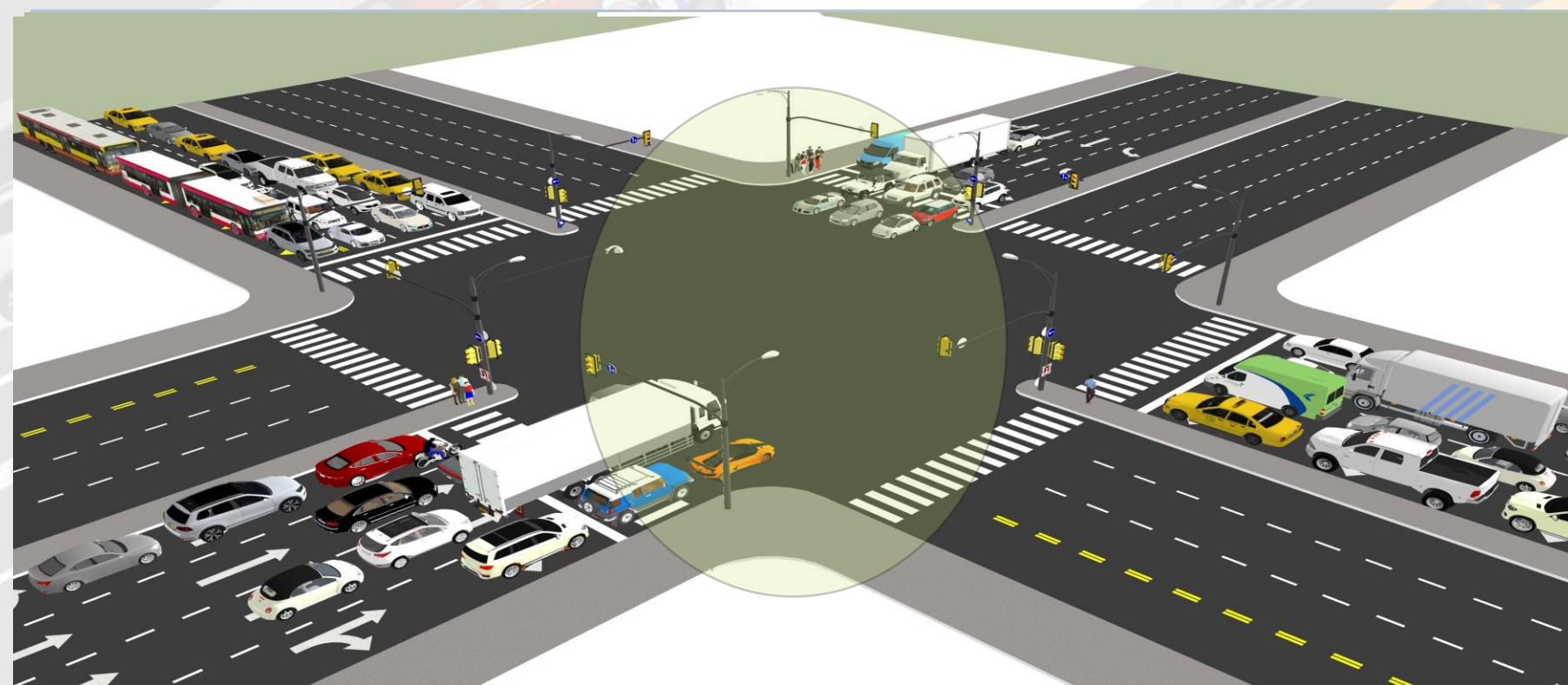
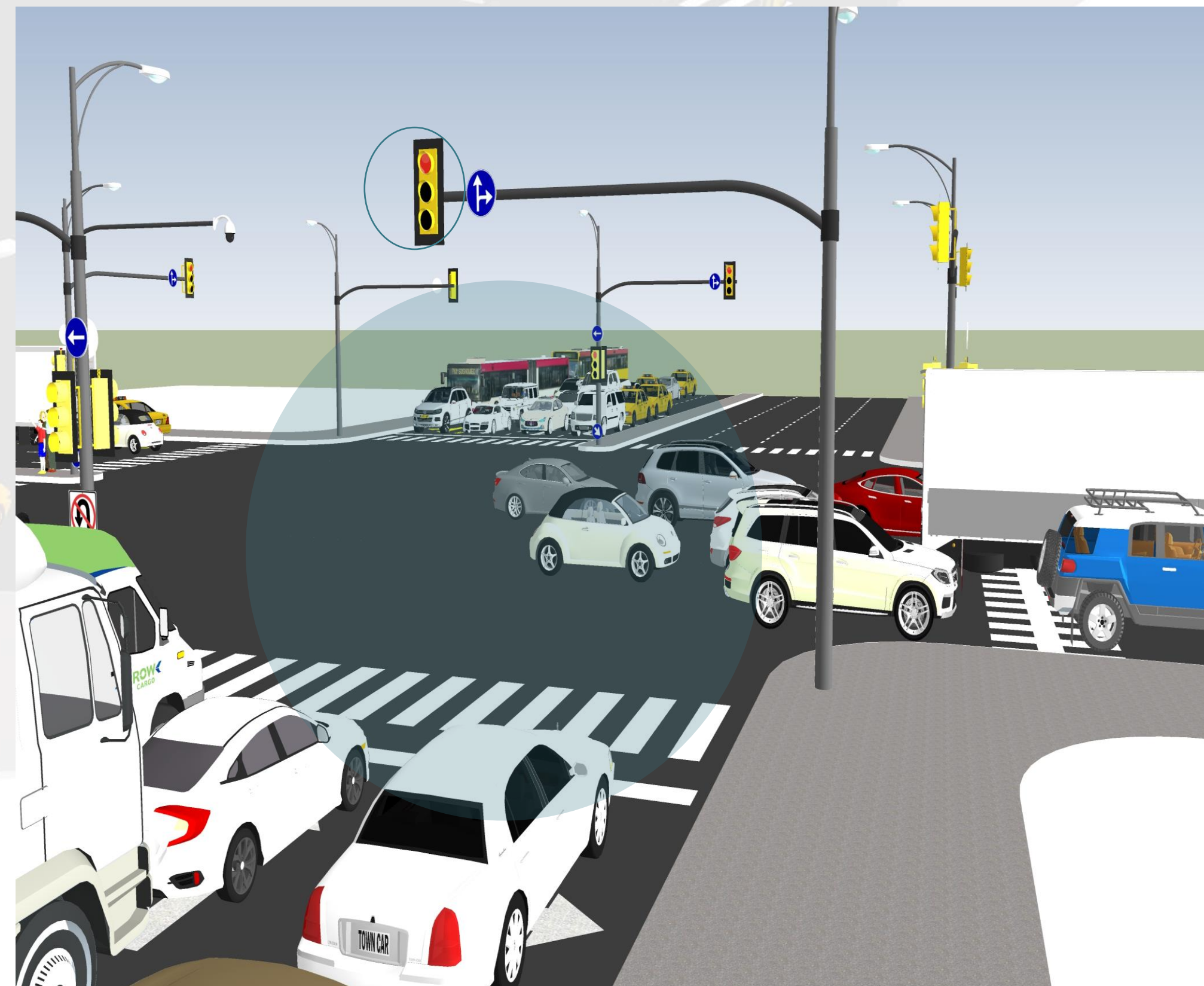


# ויסות התנועה בהתאם לעומסי התנועה העדכניים





# חסימת צומת ע"י רכבים ואי שחרור של "רמזור ירוק" לצד הנגדי



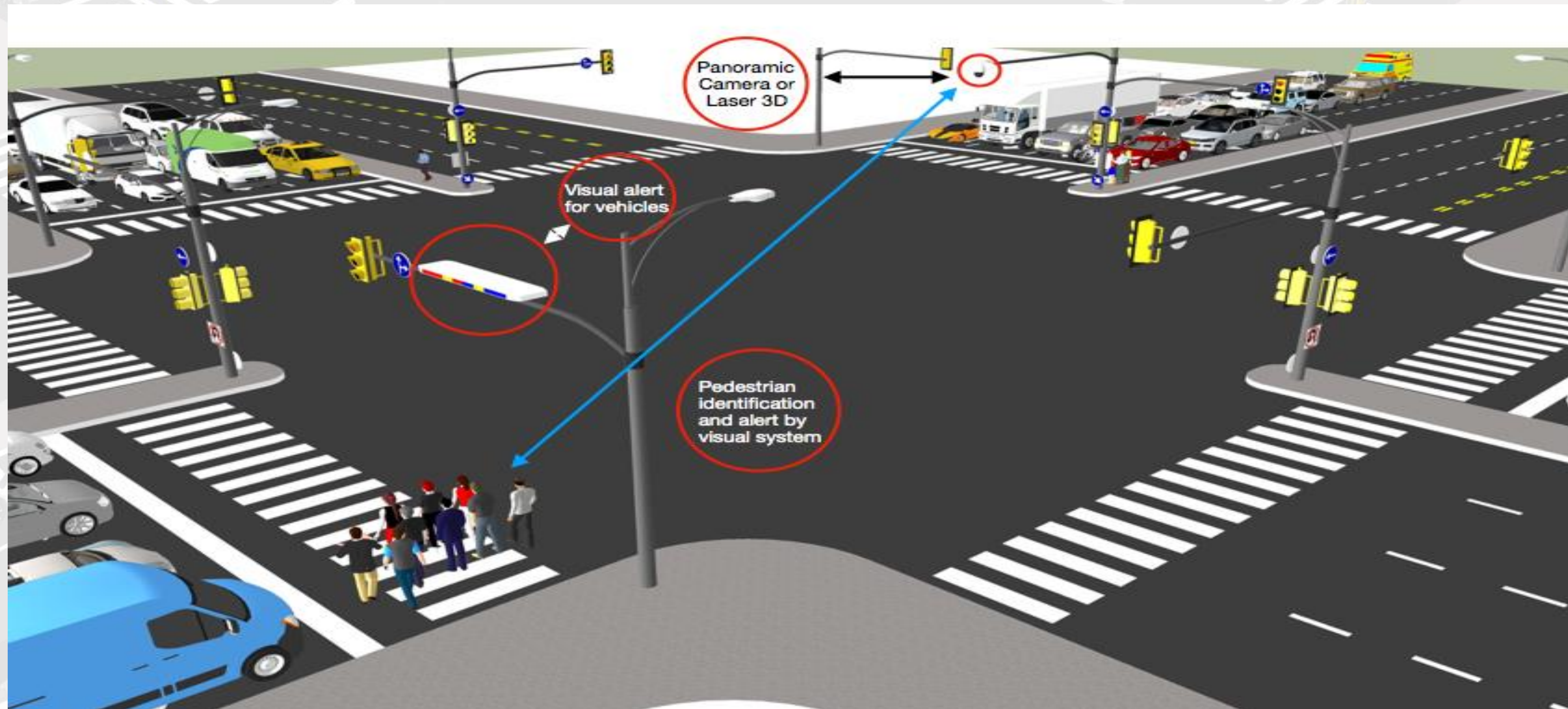


# חצייה באור אדום ואי שחרור התנועה נגדית



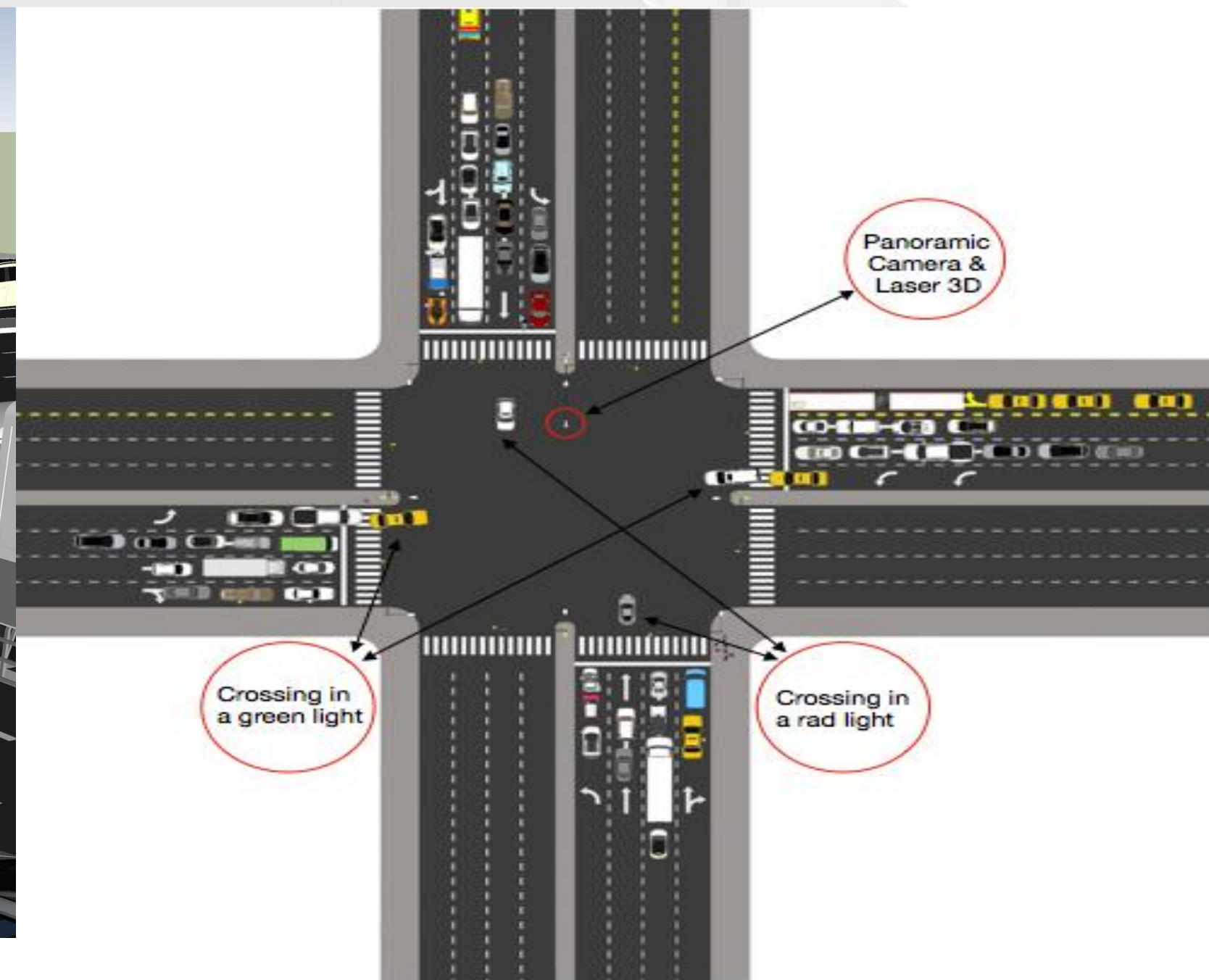
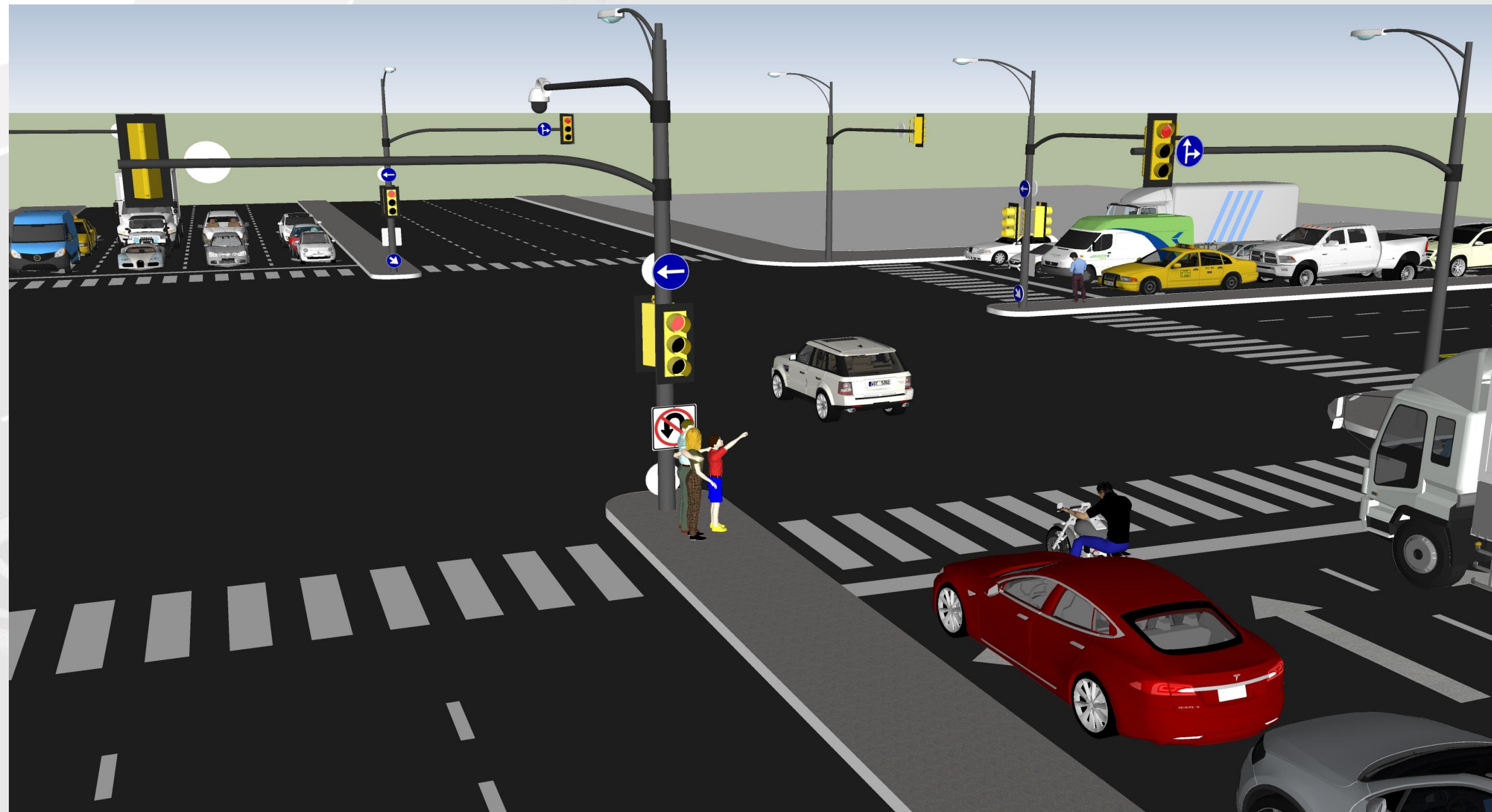


# זיהוי הולכי רגל במעברי חצייה



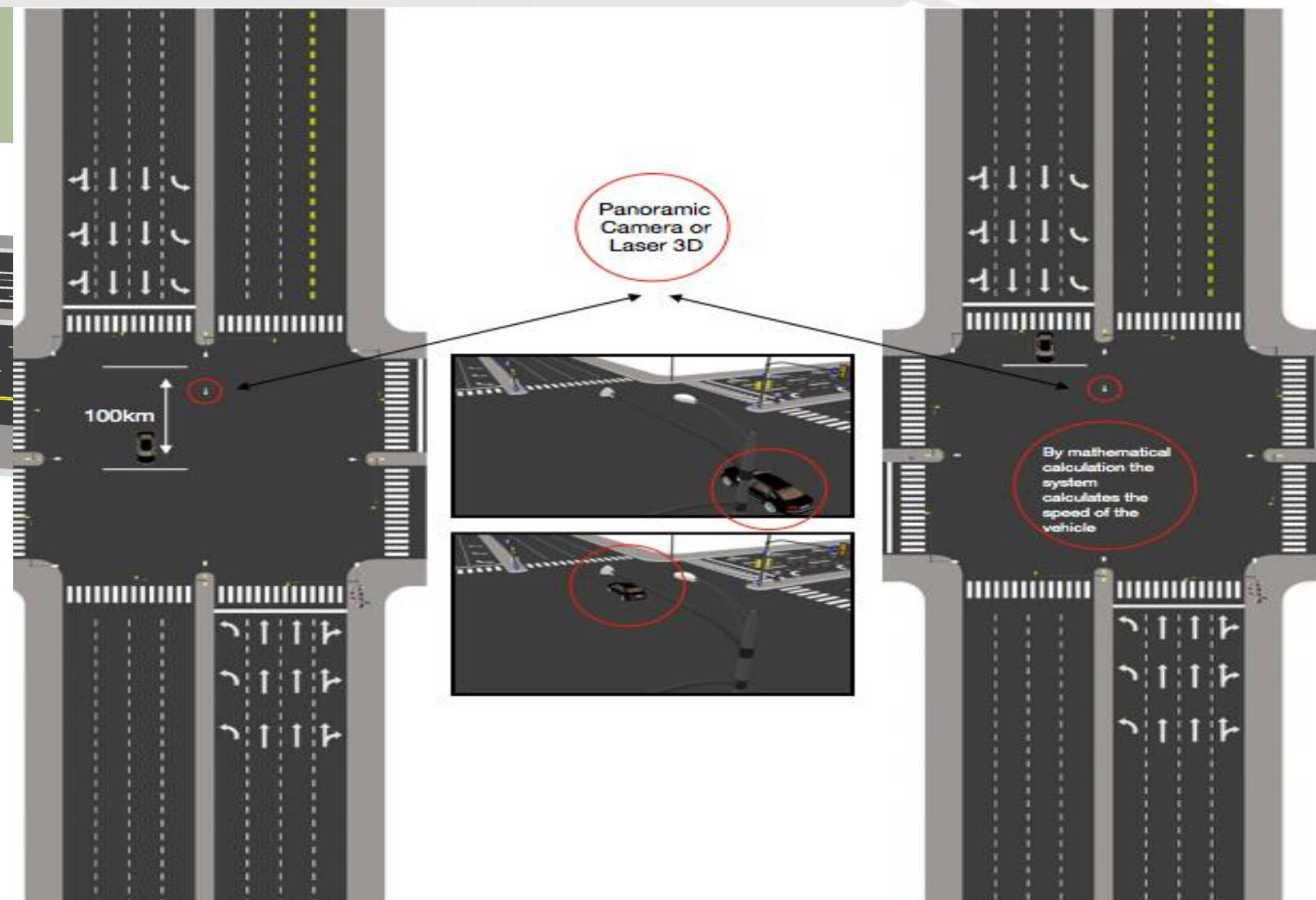
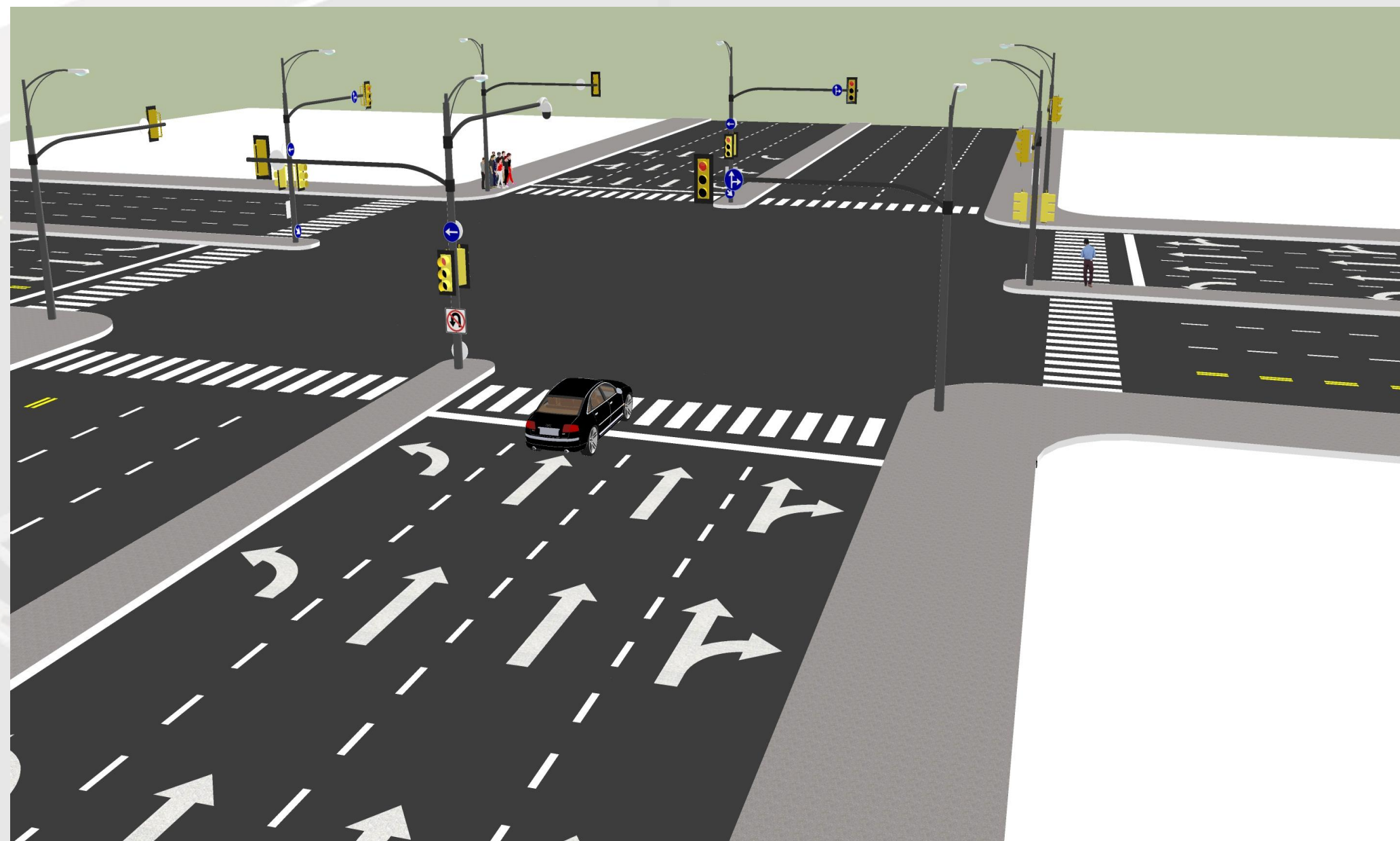


# אי עצירה ברמזור אדום



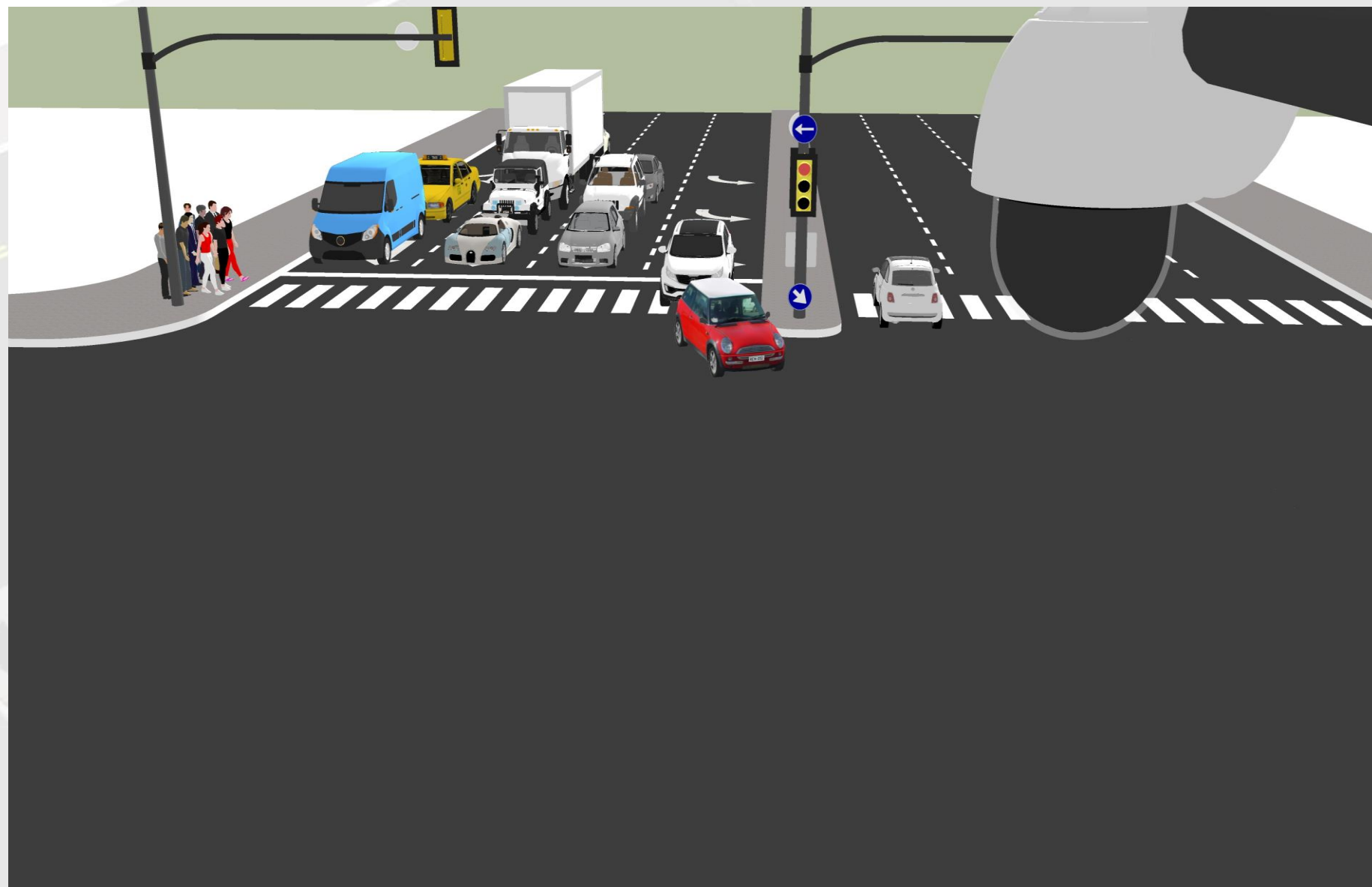


# זיהוי הולכי רגל במעברי חצייה



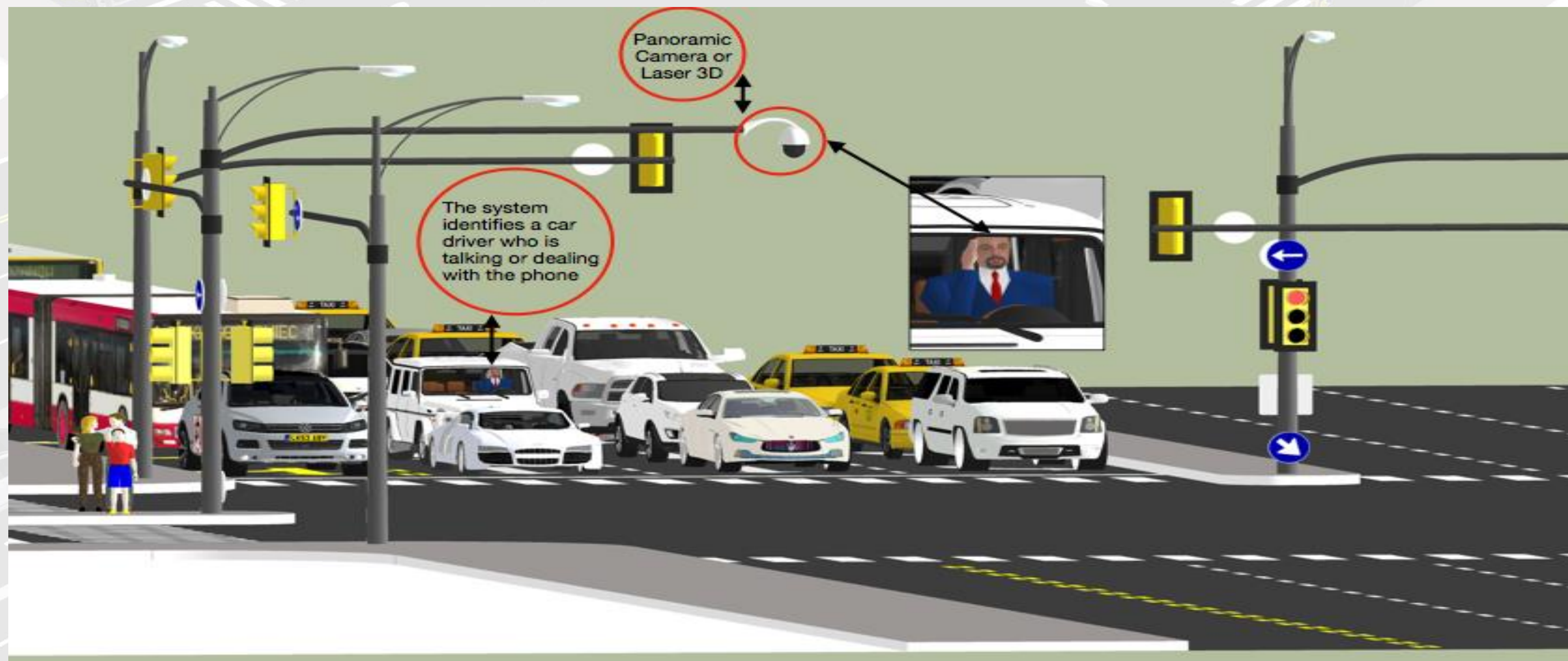


# פניית פרסה במקום אסור





# זיהוי דיבור בטלפון נייד



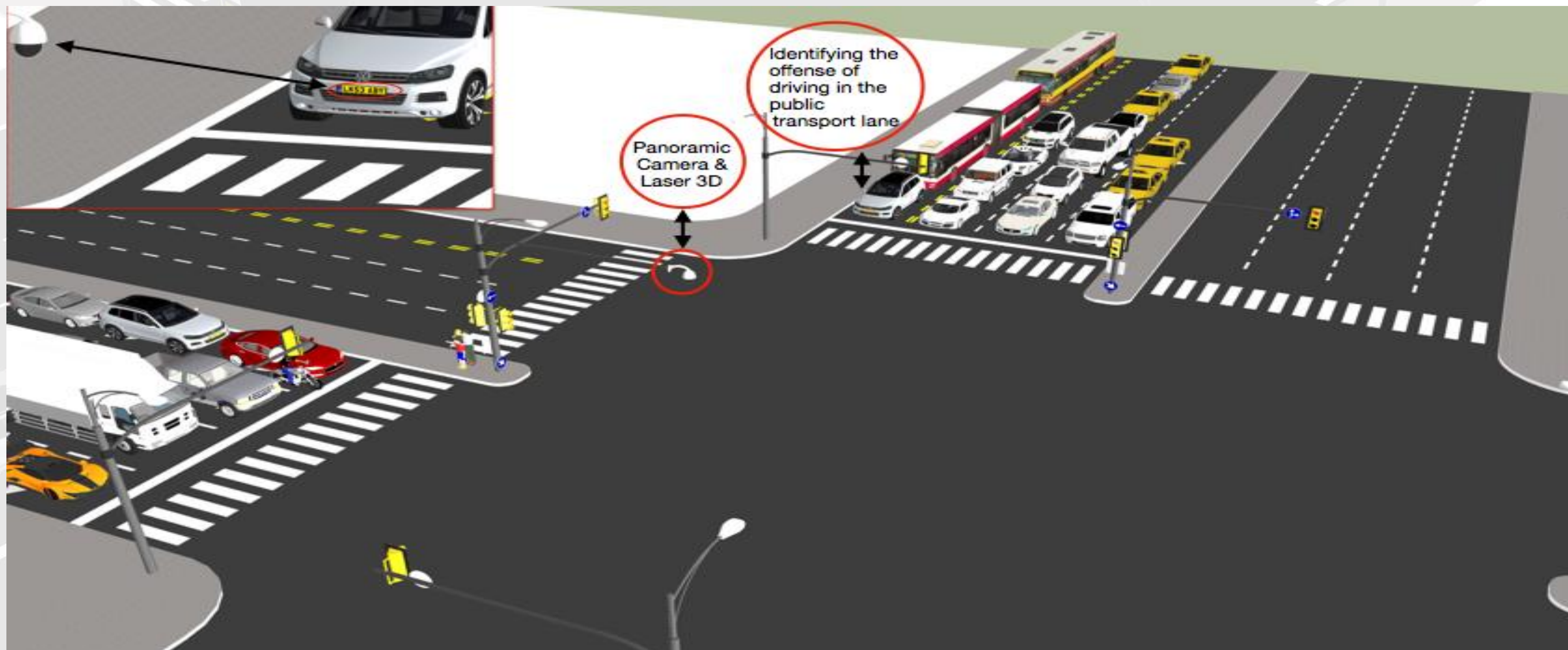


# זיהוי דיבור בטלפון נייד



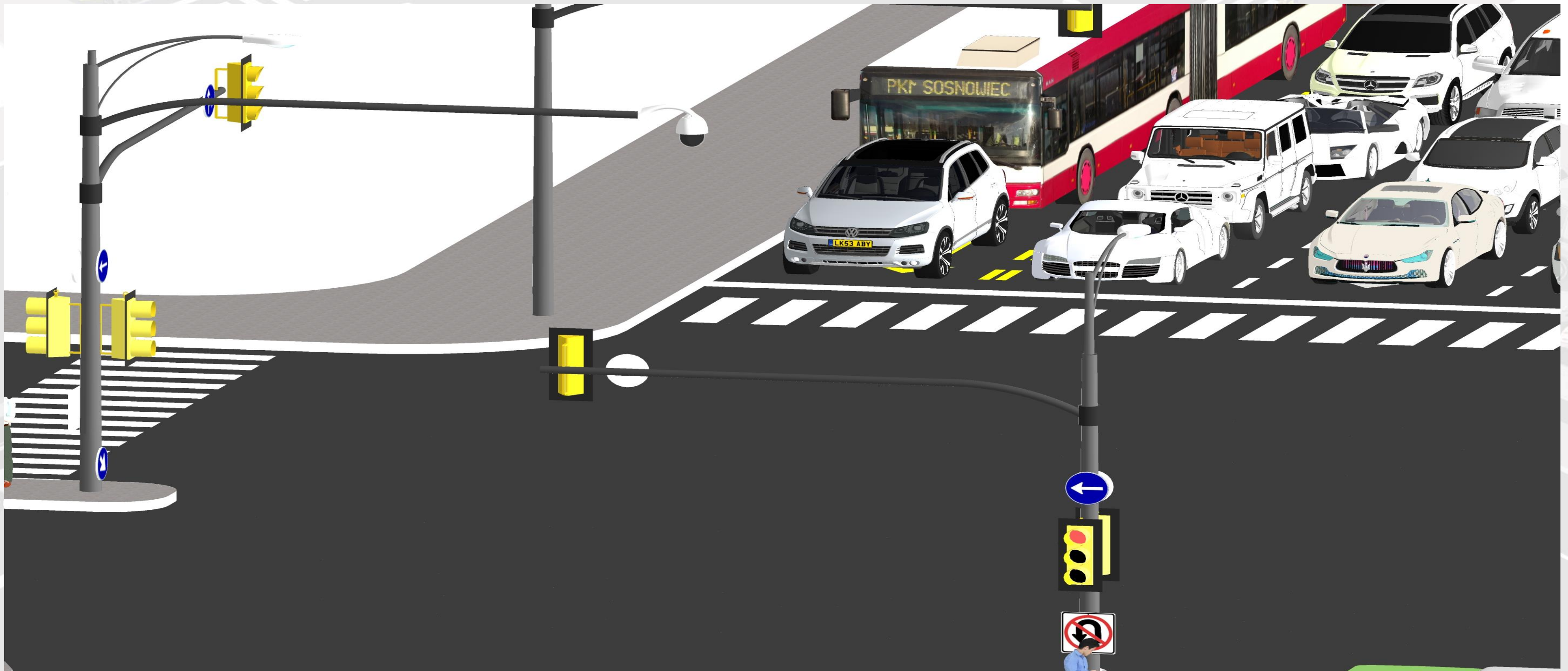


# אכיפת נסיעה בנתיב תחבורה ציבורית





# אכיפת נסיעה בנתיב תחבורה ציבורית





# Potential customers

## Smart city



- Interacting a smart city.
- Tracking traffic.
- Tracking accidents in the city.
- control system.
- Information for city planners.

## Police



- Enforcement of traffic violations.
- Significant cost redaction.
- Information on road accidents.
- Information about "hit and run" accidents.

## Autonomous cars



- Will receive information about the intersection lines.
- Will receive information about vehicles on the road.
- Enjoy constant information not dependent on weather conditions





**Thank you  
for sharing  
EyeWay™  
vision of the  
future**

**You are invited to  
contact us for a pilot  
in your city**

**nir@eyeway.io**